

# Puddle Twin II XL 2 mot.

(c) 2005 Roland Merk

**F19**



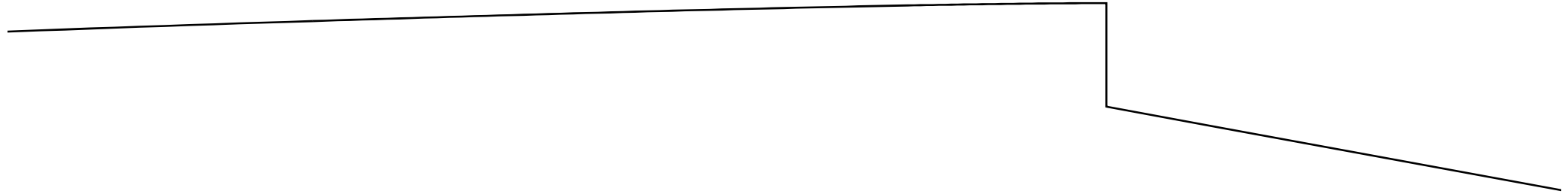
5mm Balsa hart

9x W1

2x W2



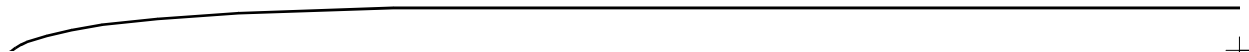
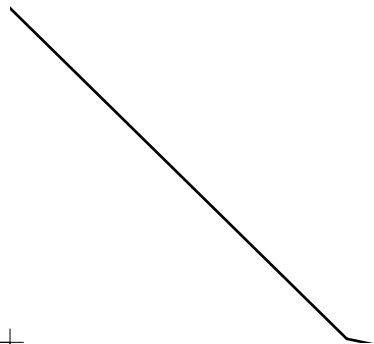
(2, 1)



Flugboot

Material: 6mm Depron

2x F14

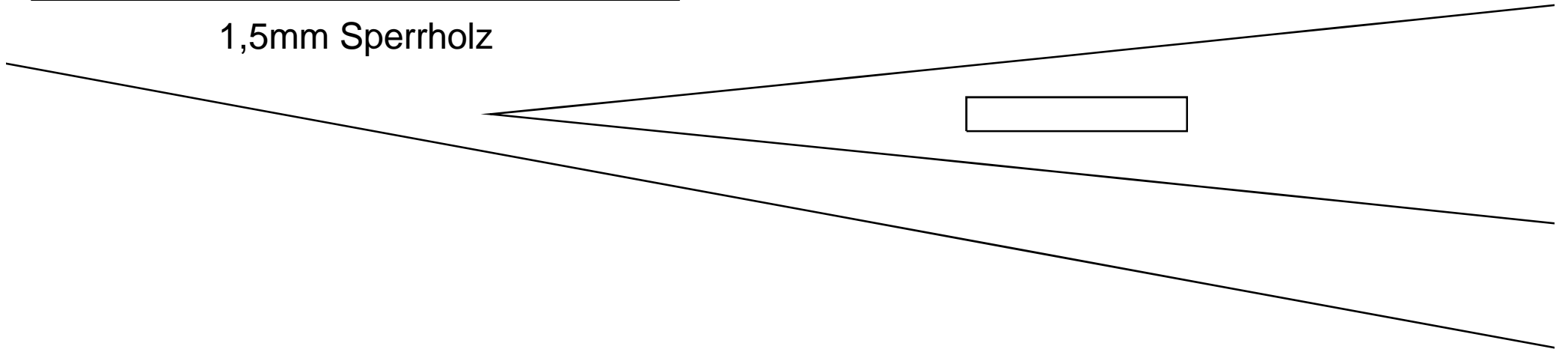




(3, 1)



1,5mm Sperrholz

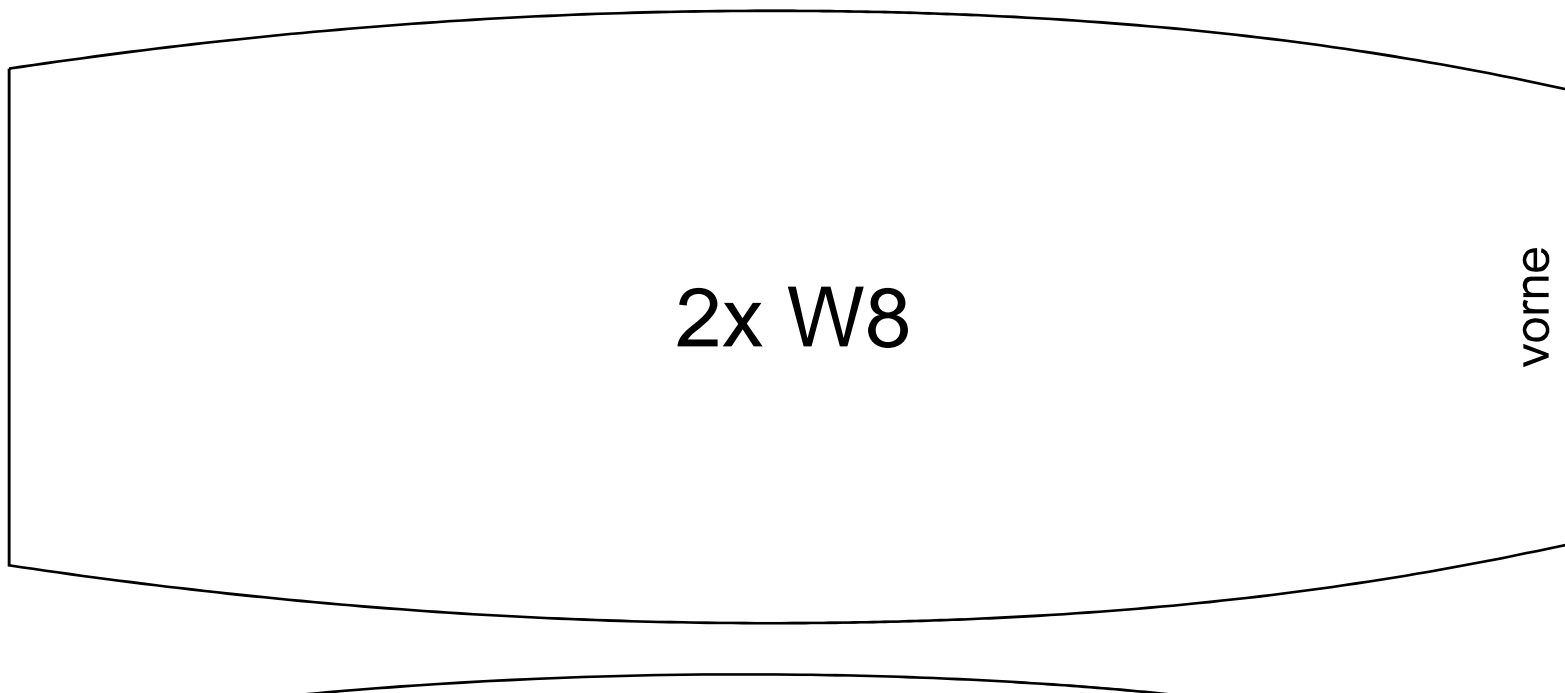
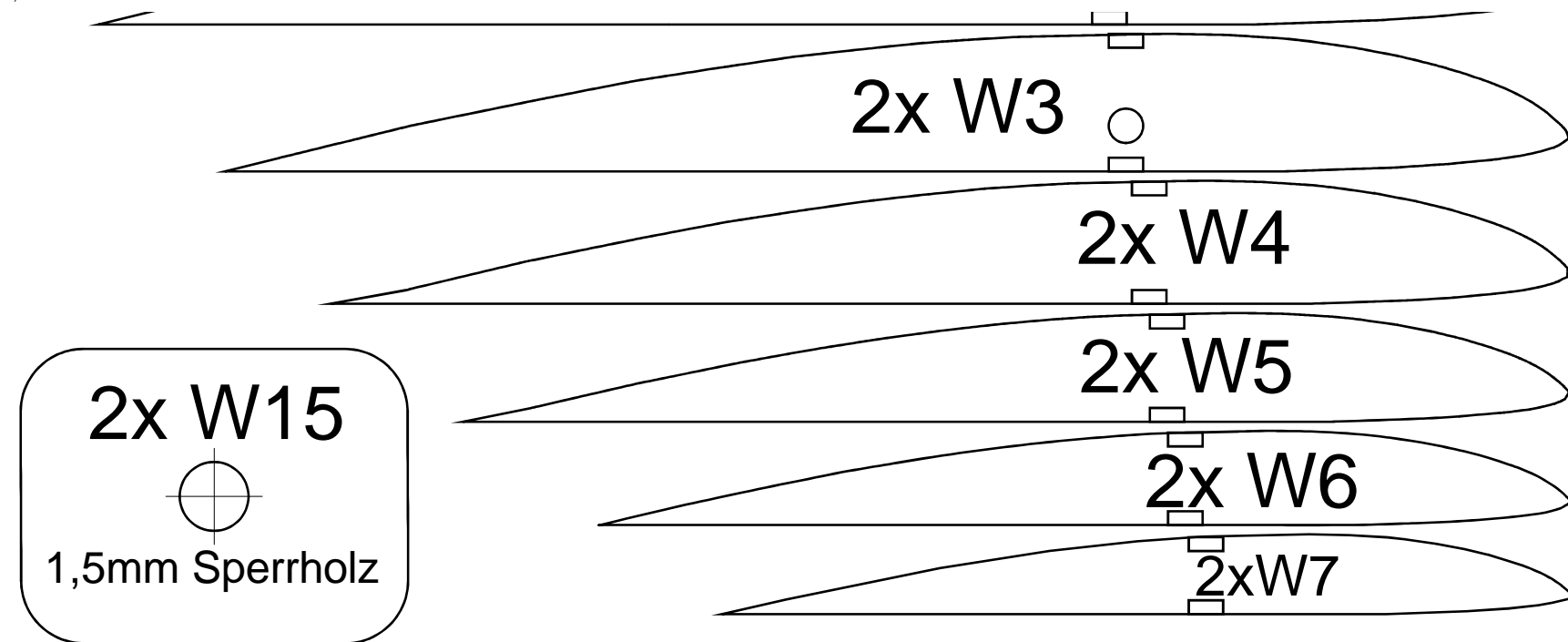


⊥ (4, 1)

F13

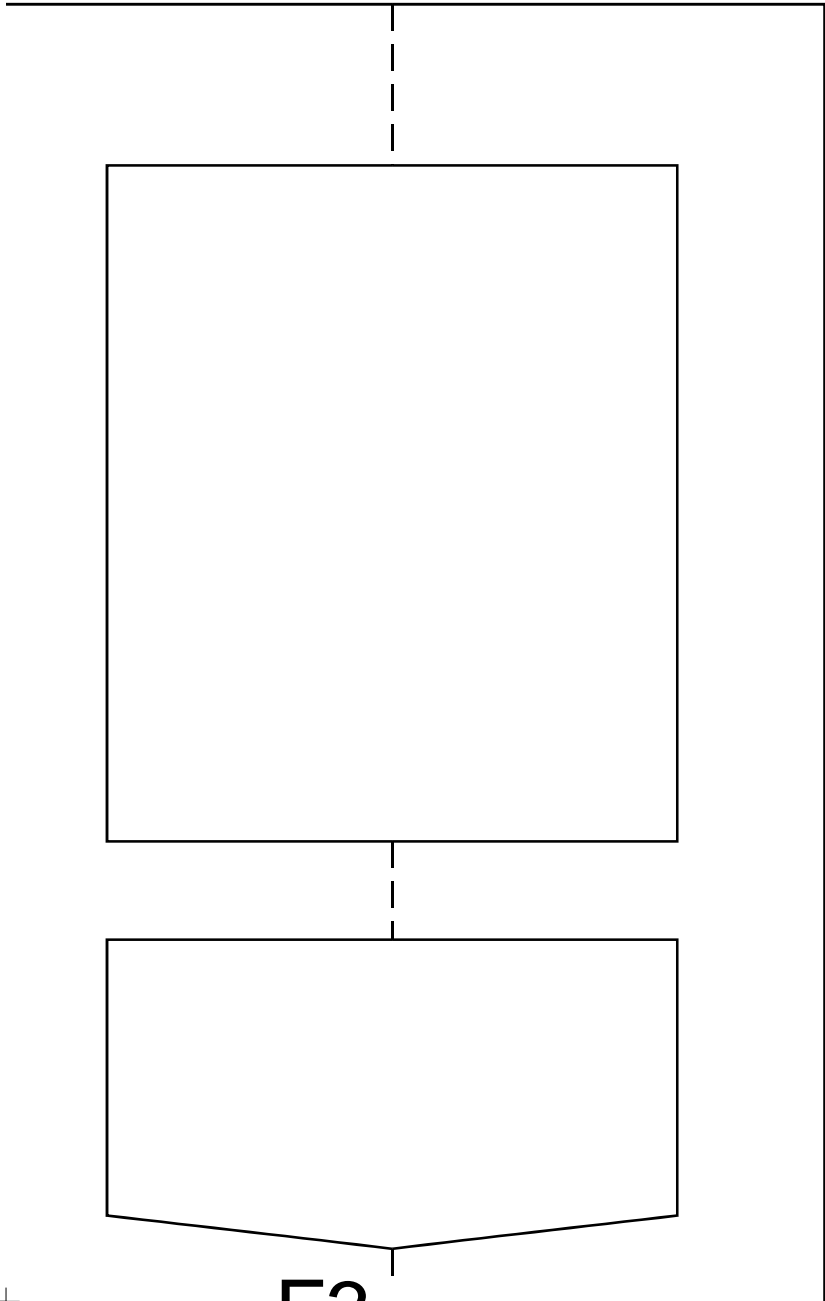
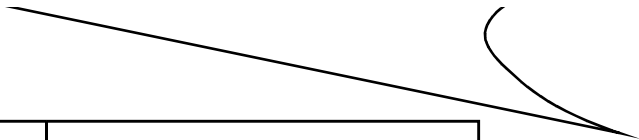
+

⊥

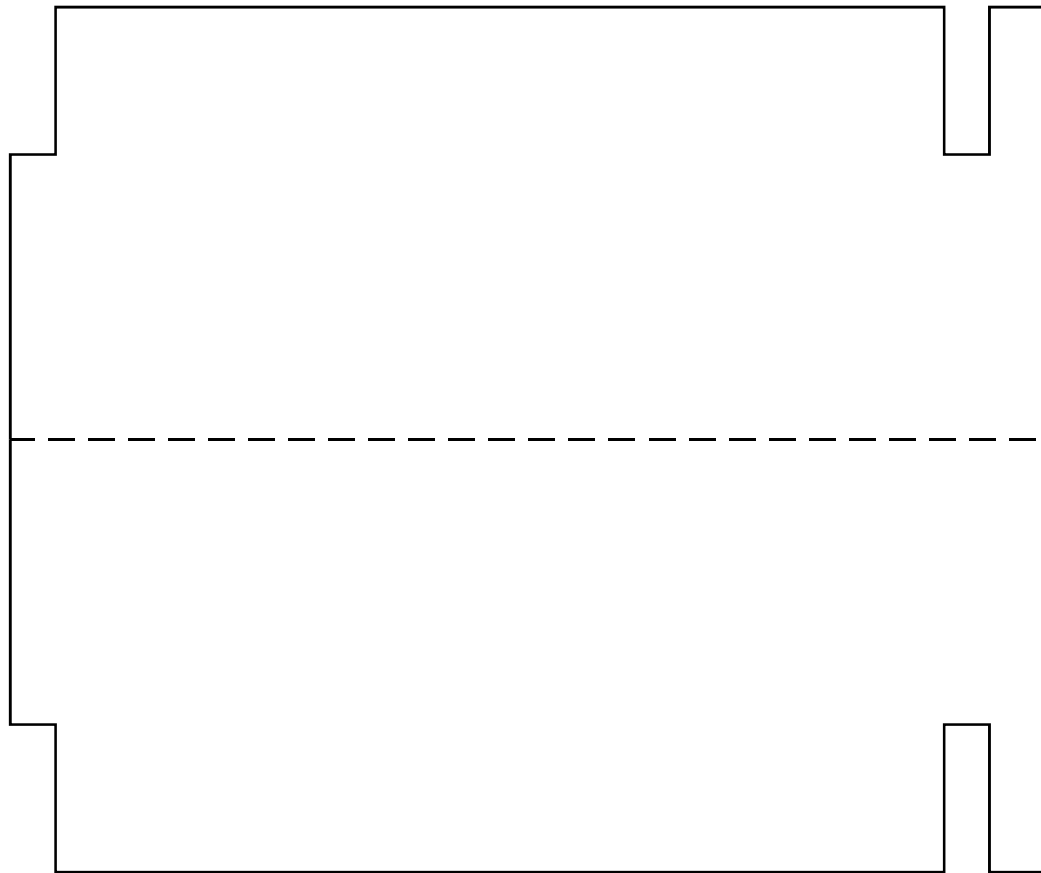




(2, 2)



52





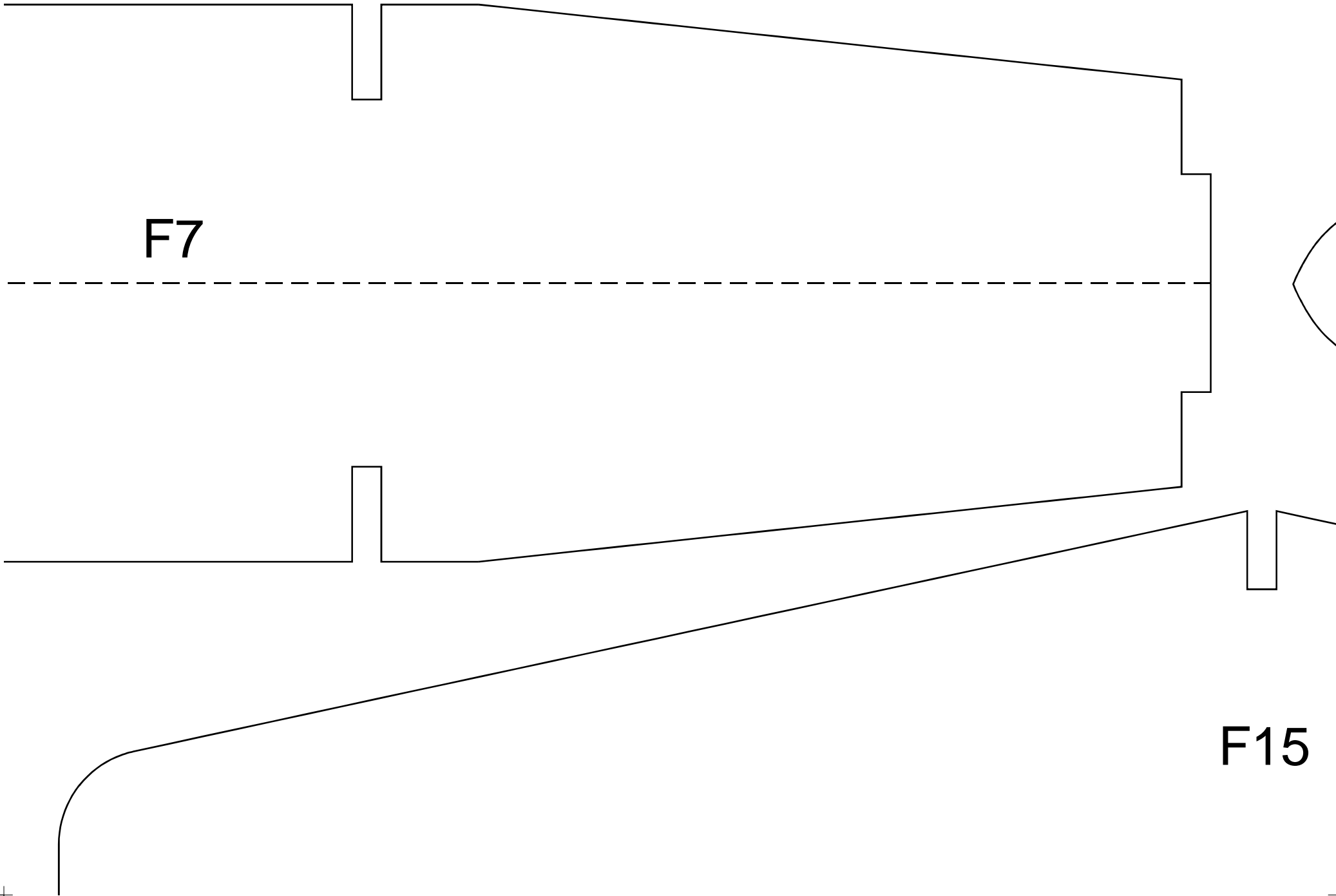
(3, 2)



F7



F15





(4, 2)



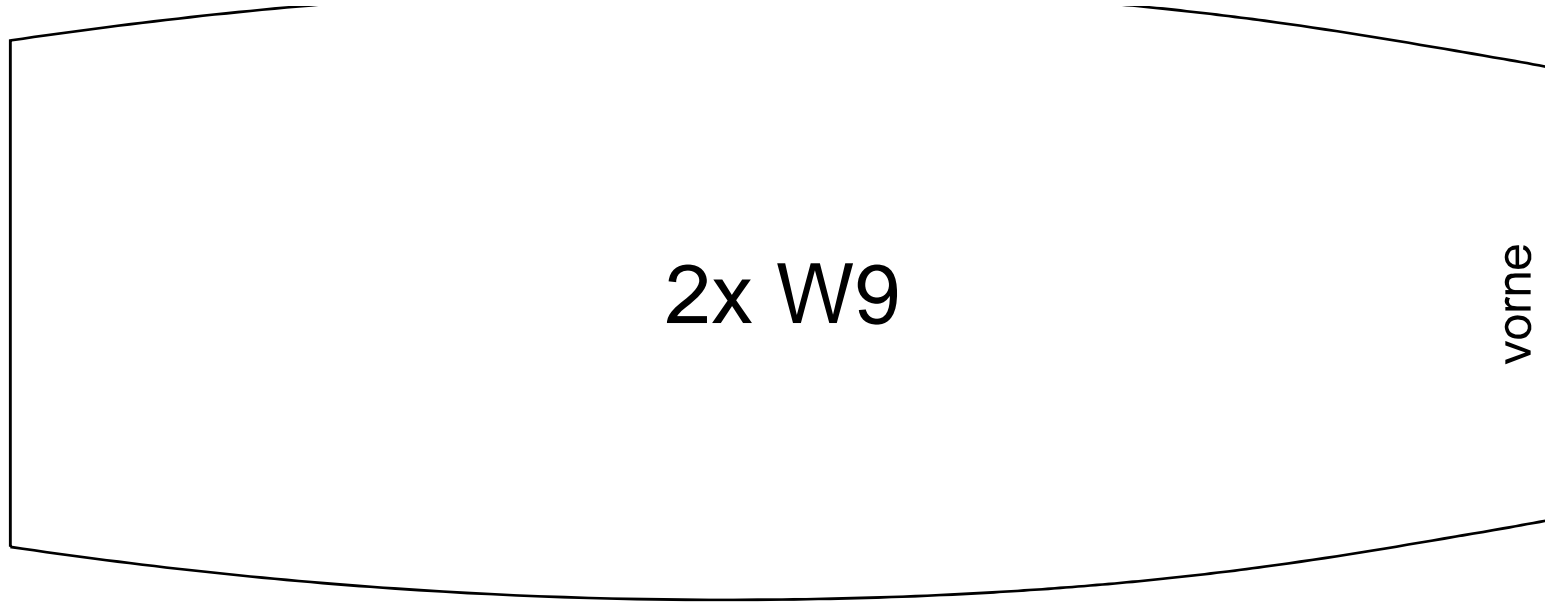
F10





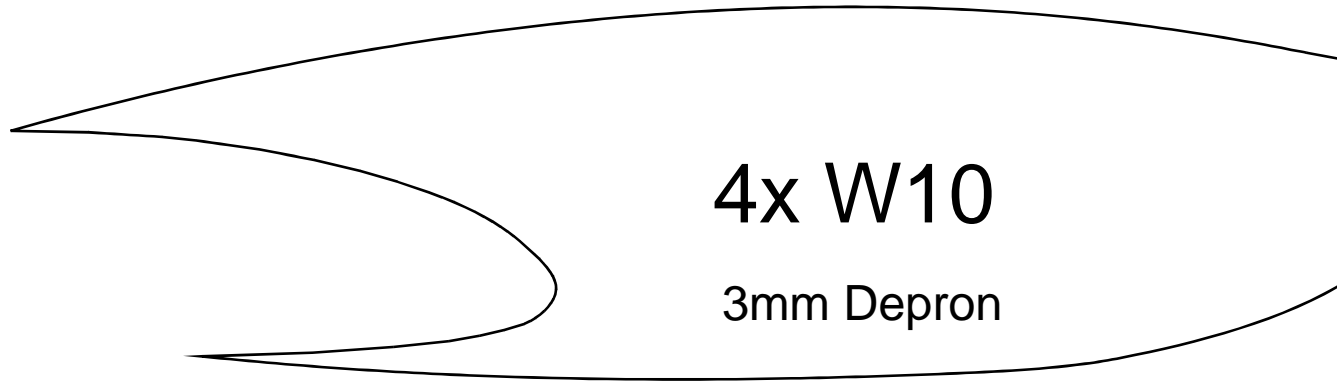


(1, 3)



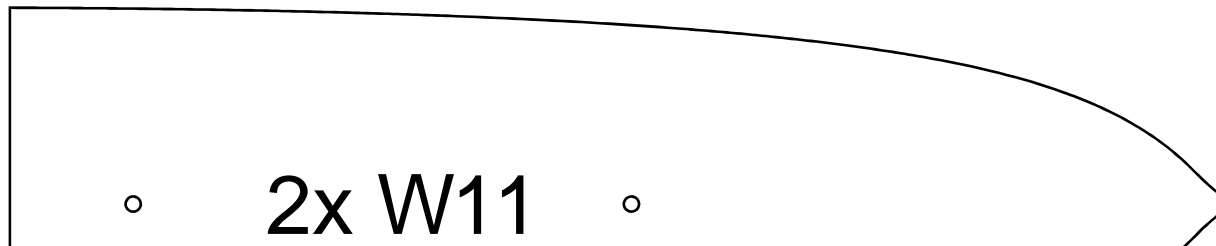
2x W9

vorne



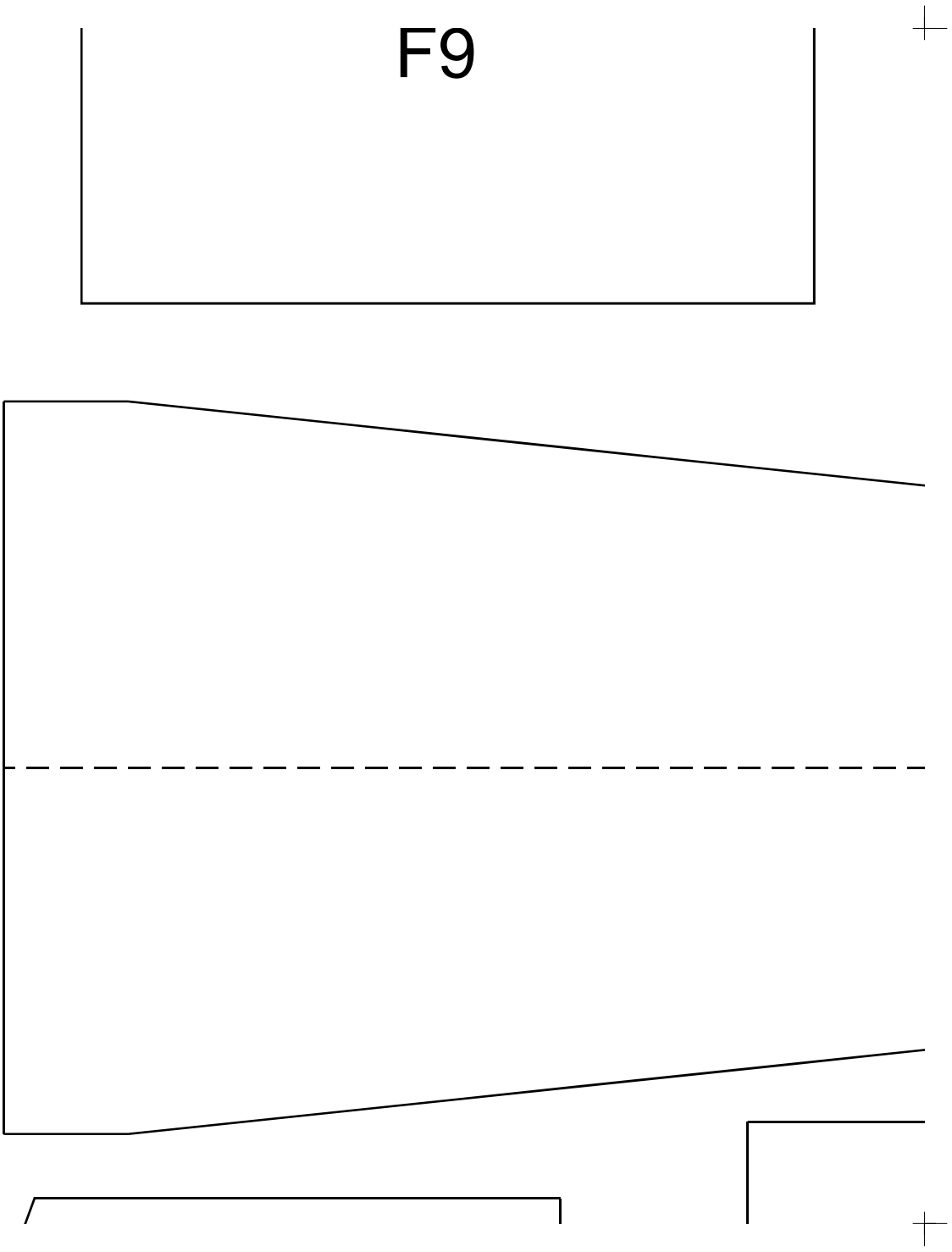
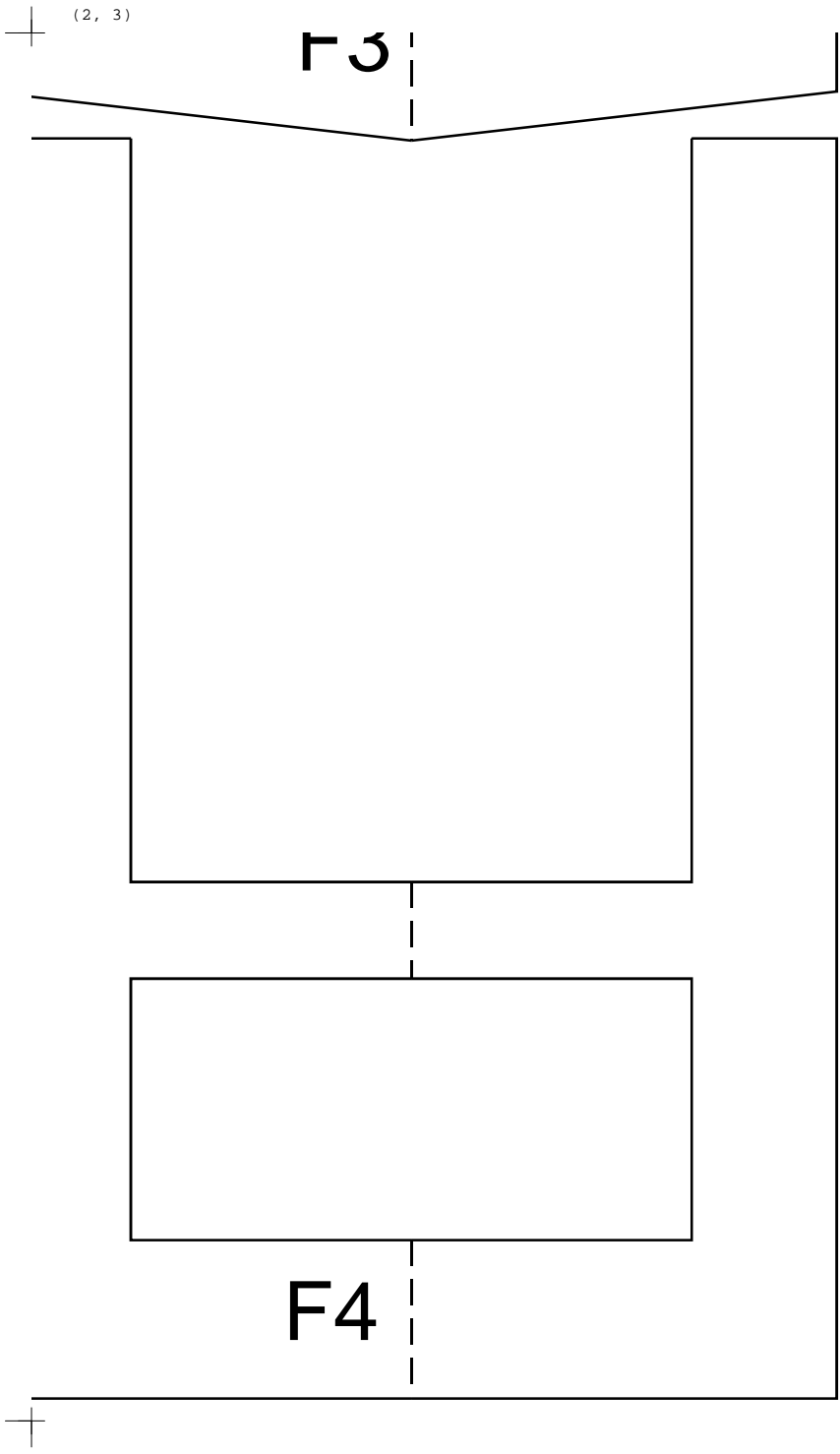
4x W10

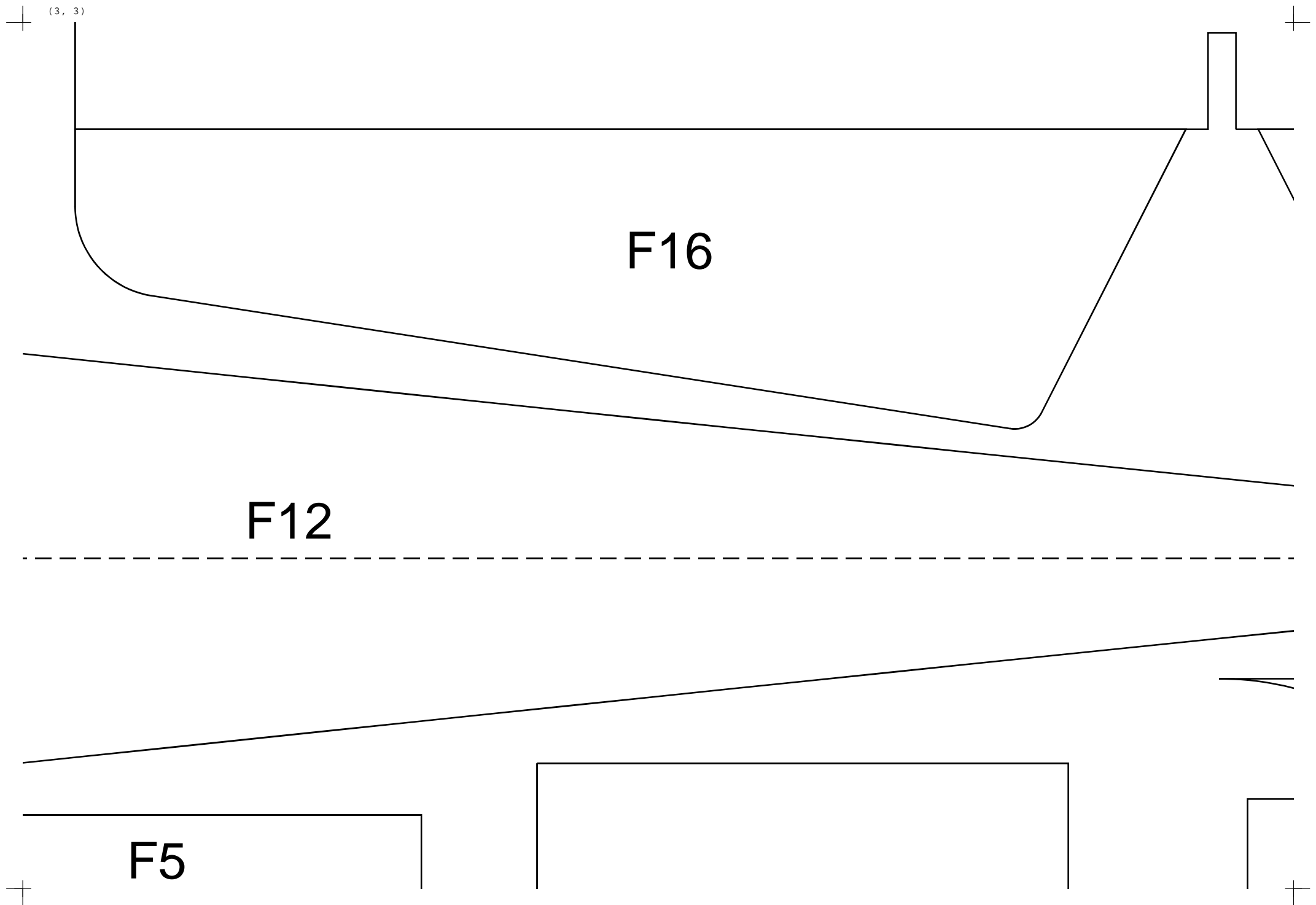
3mm Depron



2x W11







+

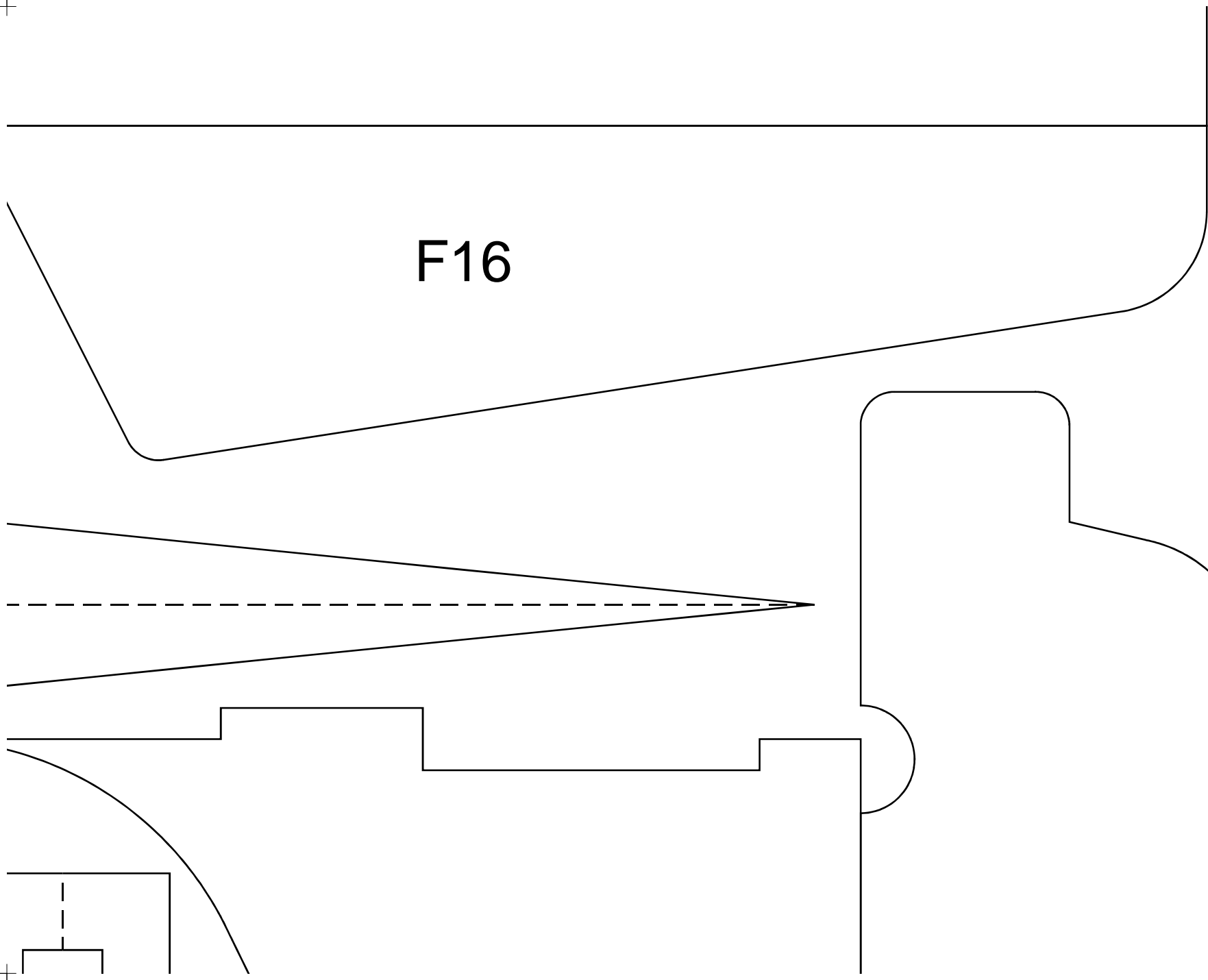
(4, 3)

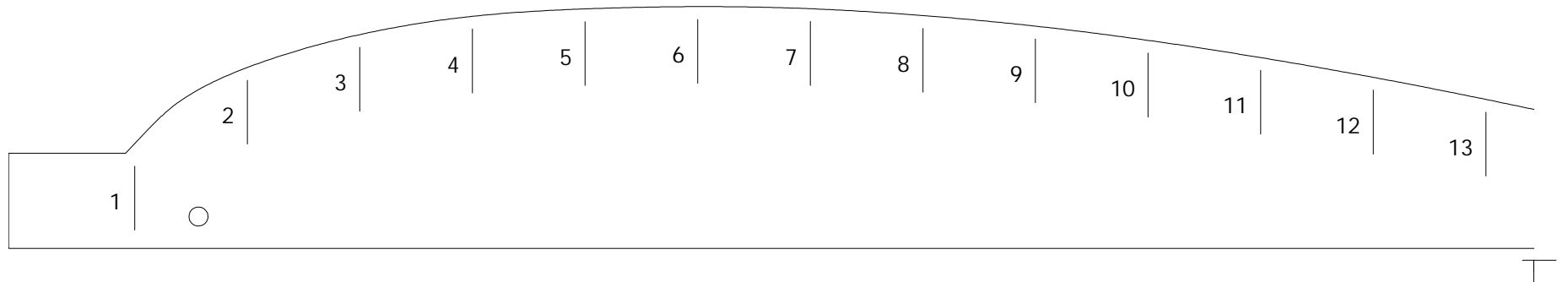
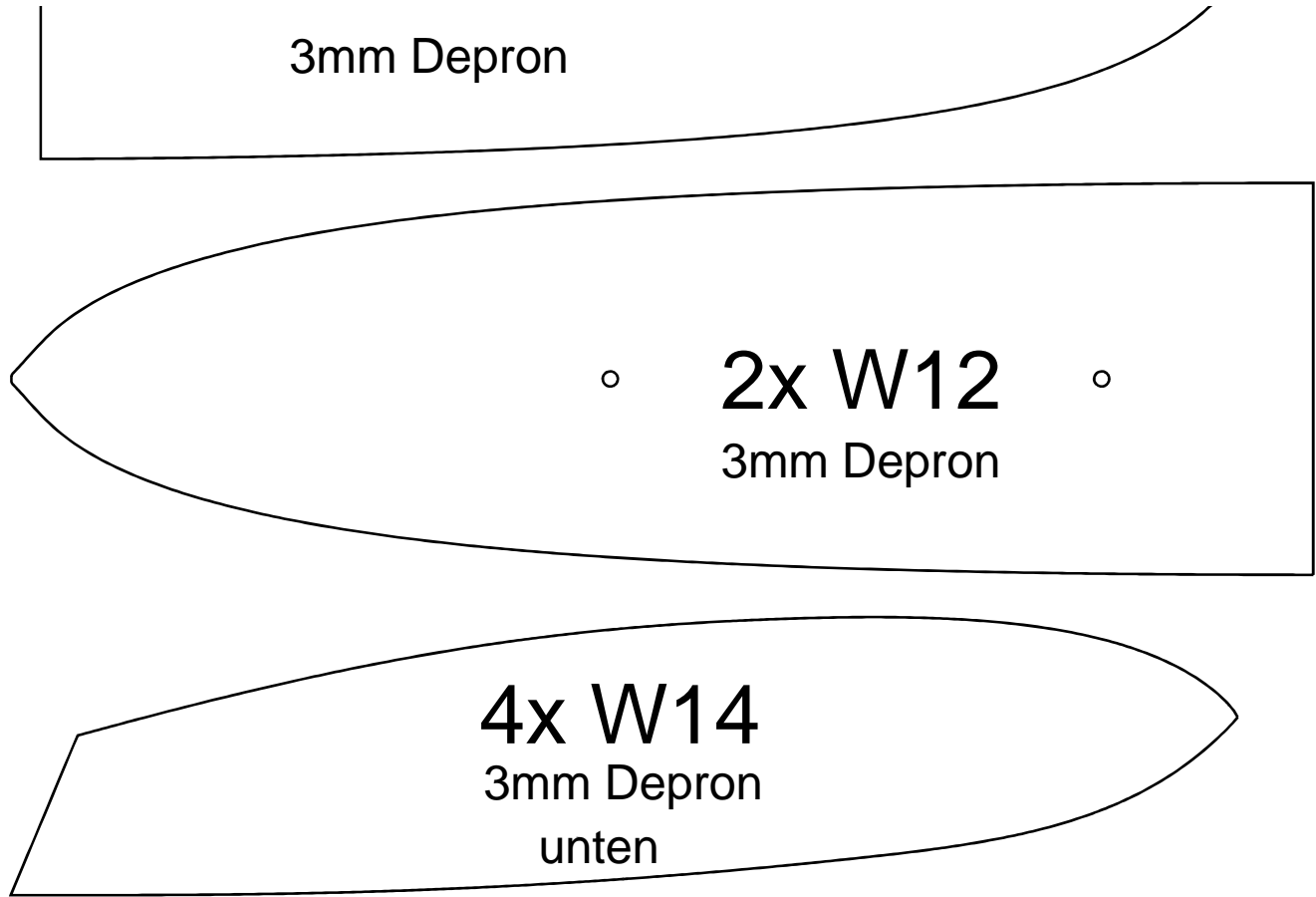
+

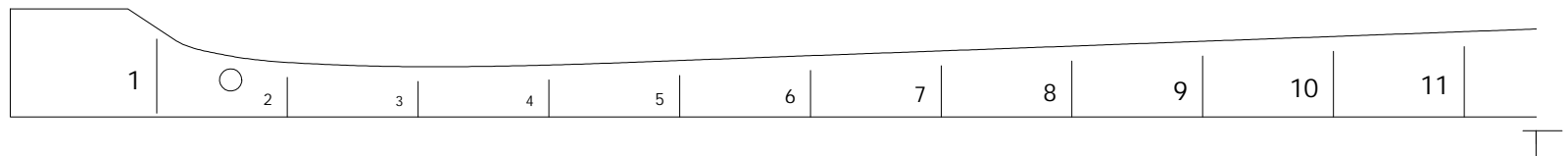
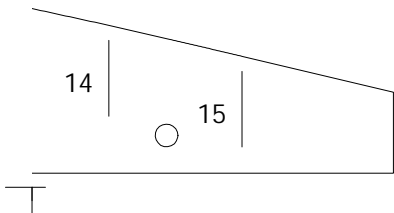
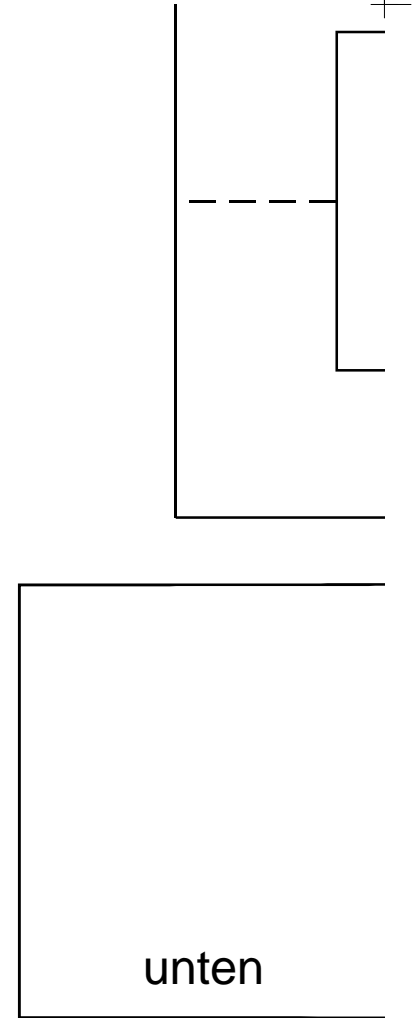
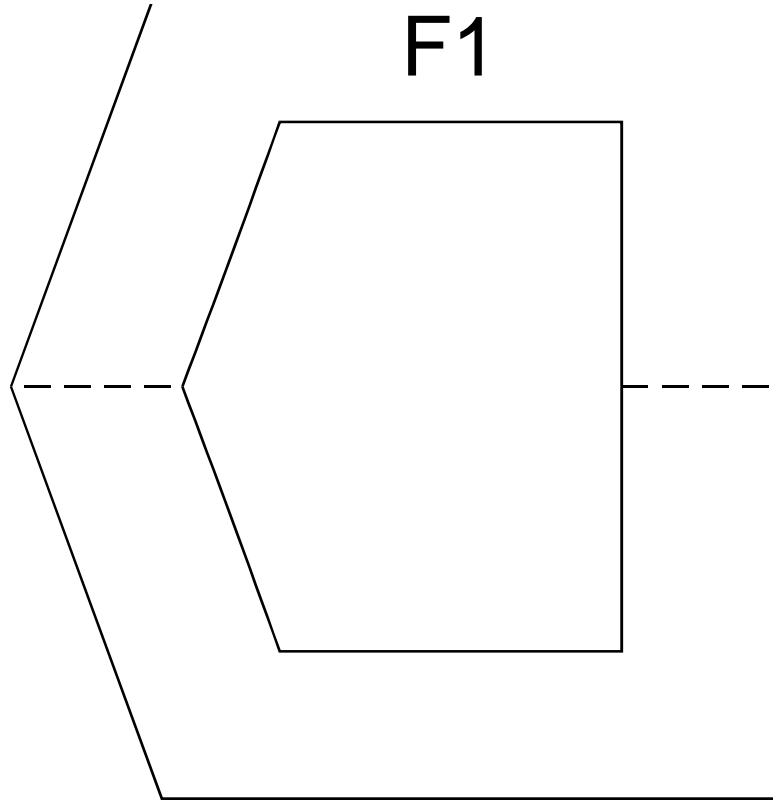
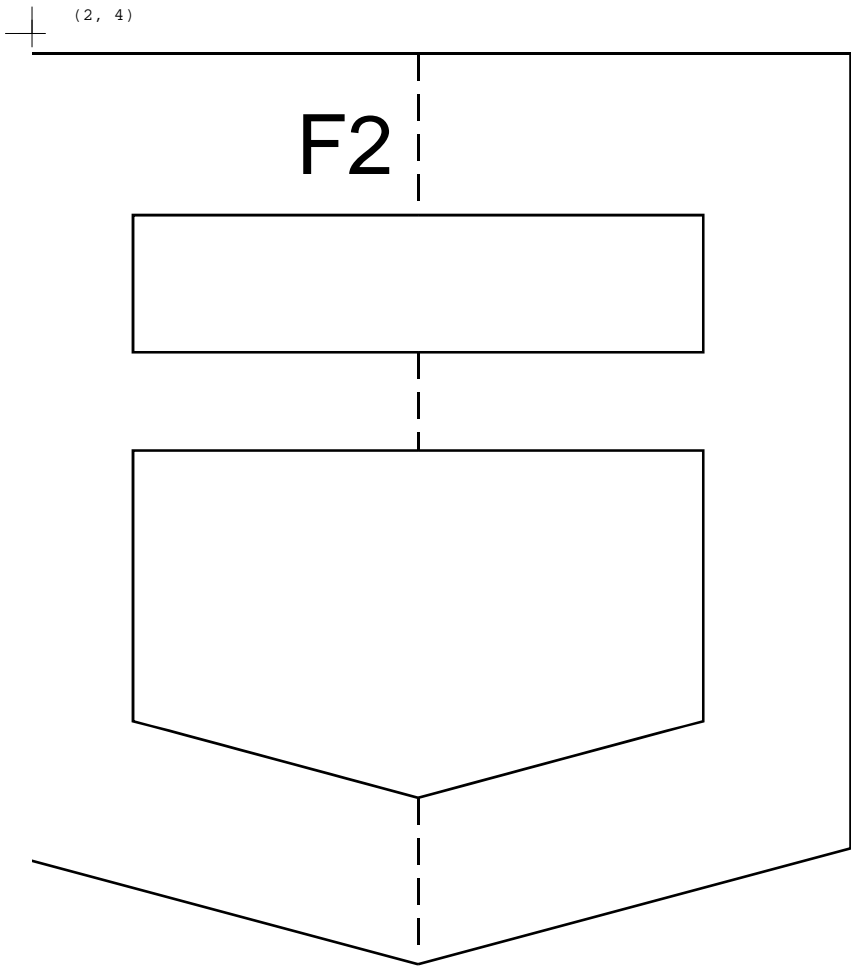
F16

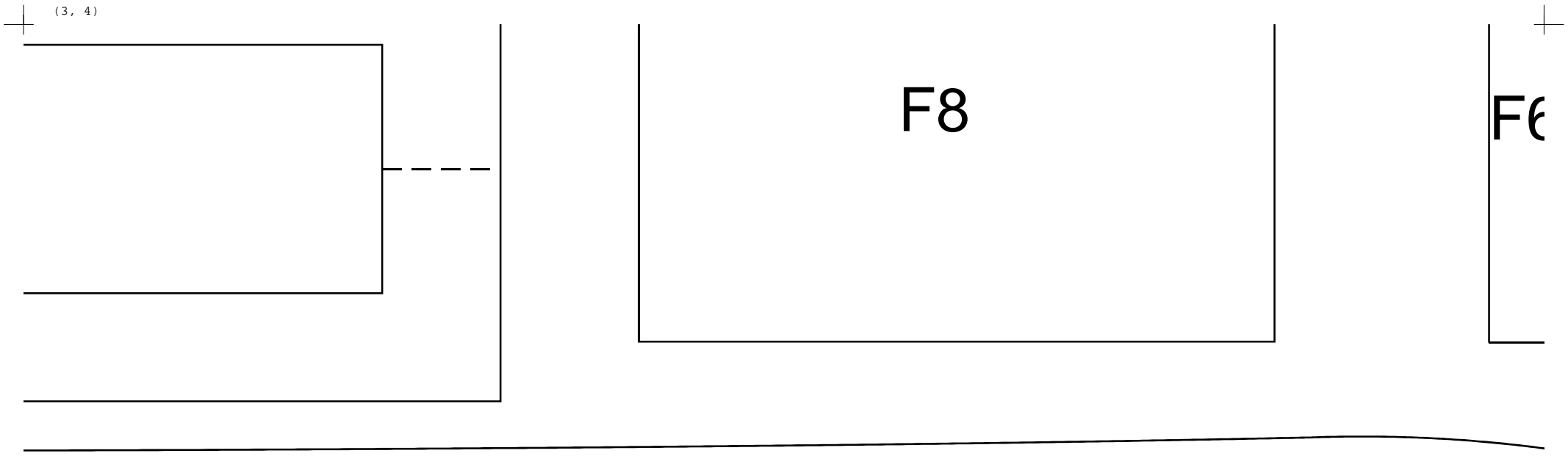
+

+

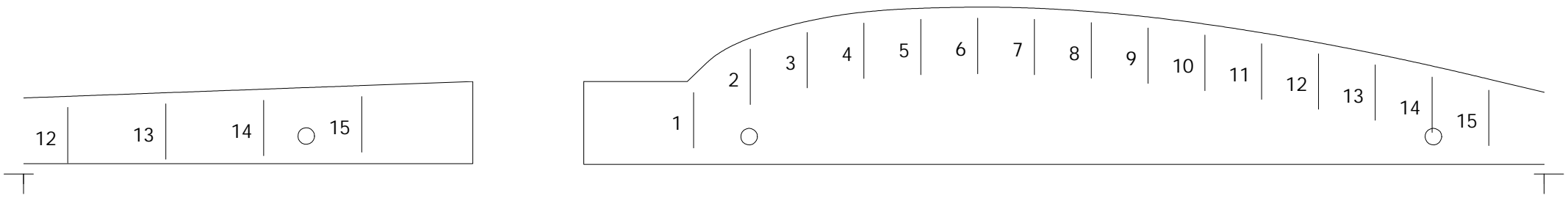








2x F11



3

# F17

# F18

I

1

2

3

4

5

6

7

8

9

10

11

12

13

14.

15

--	--